

KMN-BANC-FME21A



## Rear Molded Seat

Installation Manual

Ford Mach-E 2021+



## Copyright Notice

© Cyberkar® Systems, 2023

No part of the documentation materials accompanying this Cyberkar® Systems software product may be reproduced, transmitted, transcribed, stored in a retrieval system, sold, exploited commercially or translated into any language or computer language, in any form or by any means, including, but not limited to, electronic, magnetic, optical, chemical, manual, or otherwise without prior written permission of Cyberkar® Systems.

The contents of this documentation are protected by applicable copyright laws and will be distributed with a software that includes an end-user license agreement.

The information contained herein is provided for informational purposes only and is subject to change without notice. Cyberkar® Systems assume no responsibility or liability for any errors or inaccuracies that may appear in the informational content contained in this document.

Cyberkar® Systems, Cyberkar® and Kommander® logos are trademarks of Cyberkar® Systems in the United States and Canada. Other trademarks used in this document may be trademarks of the manufacturers or vendors of the respective products.

### Cyberkar® Systems

---

Address:	3026 Anderson, suite 202 Terrebonne, Quebec, J6Y 1W1 Canada
----------	---

---

Toll-free number:	1-855-951-3080
-------------------	----------------

---

E-mail:	info@cyberkar.com
---------	-------------------

---

## Table of Content

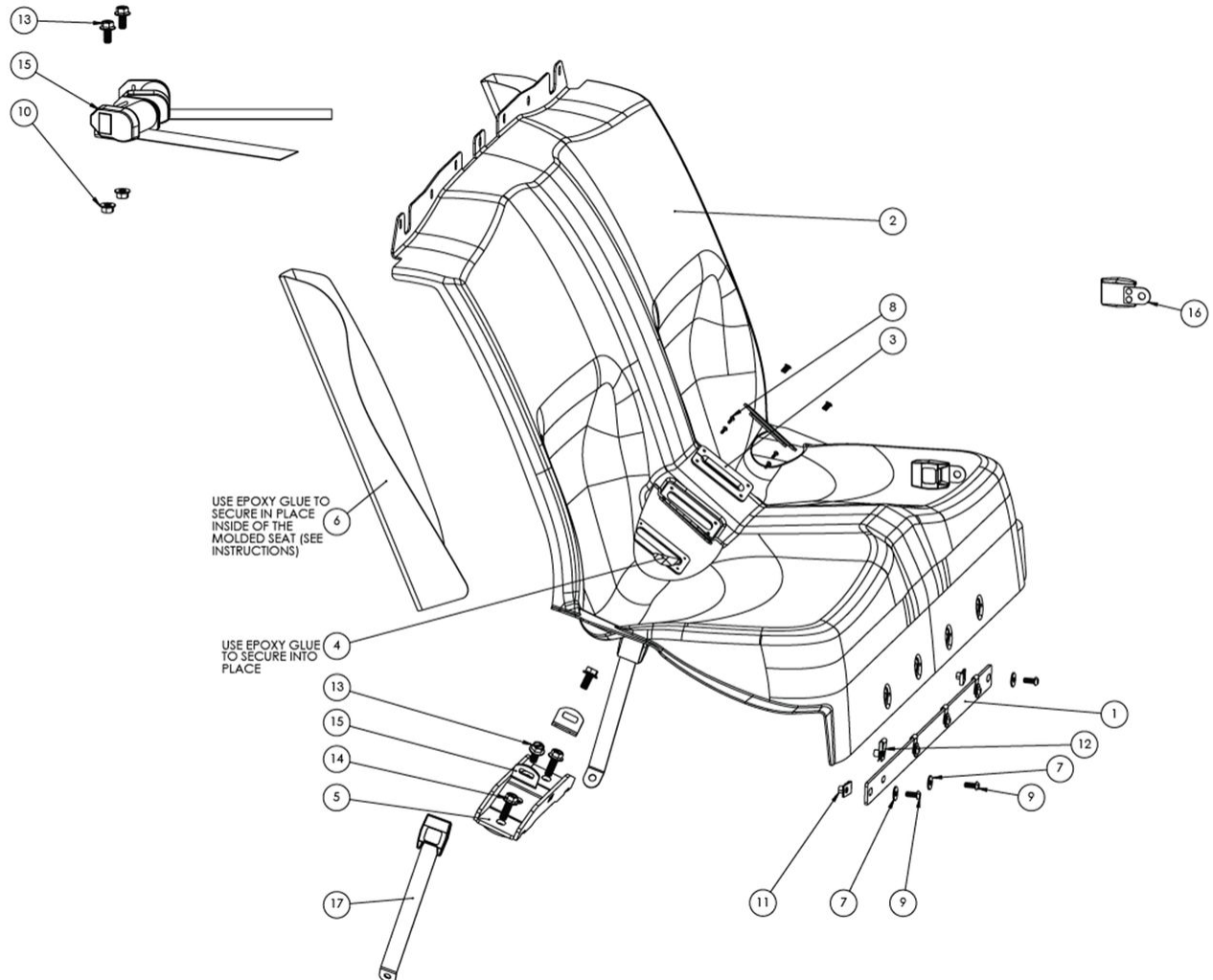
<b>1</b>	<b>WORK TIME.....</b>	<b>4</b>
<b>2</b>	<b>EXPLODED VIEW.....</b>	<b>5</b>
<b>3</b>	<b>PARTS INCLUDED .....</b>	<b>6</b>
<b>4</b>	<b>HARDWARE BAG .....</b>	<b>8</b>
<b>5</b>	<b>PREPARING TO INSTALL.....</b>	<b>9</b>
5.1	Uninstalling the front seats	10
5.2	Uninstalling the OEM console	17
5.3	Uninstalling the OEM console (Cont'd)	25
5.4	Uninstalling the OEM backseat	45
<b>6</b>	<b>INSTALLATION .....</b>	<b>50</b>
<b>7</b>	<b>TECHNICAL SUPPORT .....</b>	<b>63</b>

# 1 WORK TIME






---

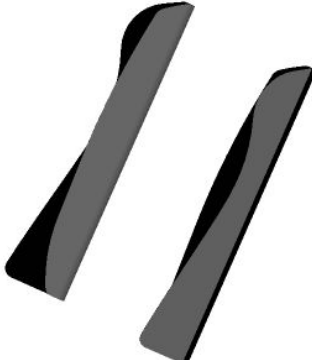
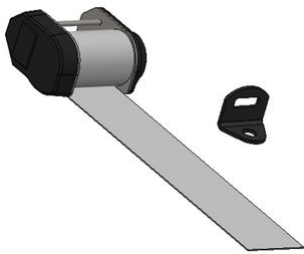
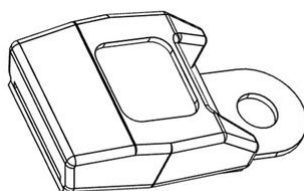


<b>Work time</b>	1 h 30 min
------------------	------------

## 2 EXPLODED VIEW











## 3 PARTS INCLUDED

#	N° / SKU	DESCRIPTION	QT	IMG
1	FA00007648-M-10025	Backseat mounting plate	1	
2	FA00007648-M-10114	Molded backseat	1	
3	FA00007648-M-10117	Pass-through	2	
4	FA00007648-M-10118	Pass-through mounting plate	2	
5	FA00007648-M-10185	Seatbelt mount	1	

#	N° / SKU	DESCRIPTION	QT	IMG
6	FA00007648-M-10186	Pair of airbag covers	1	
15	SEATBELT	Belt dispenser	2	
16	SEATBELT RECEPTACLE	Prisoner partition buckle	2	
17	SEATBELT RECEPTACLE LONG	Floor buckle	2	
	KMN-HB-BANC-FME21A	Hardwarwe bag	1	

## 4 HARDWARE BAG

#	N° / SKU	DESCRIPTION	QT	IMG
7	MCMaster_91100A160	Washer oversized, M8	9	
8	MCMaster_91900A852	Tamper-Resistant Button Head Torx Screw, M4 x 0.70 mm, 12 mm	8	
9	MCMaster_91900A867	Tamper-Resistant Button Head Torx Screw, M8 x 1.25 mm, 20 mm	9	
10	MCMaster_94942A104	High-Strength Class 10 Steel Flange Nut, M12 x 1.75 mm	2	
11	MCMaster_95210A200	Clip-On Barrel Nut, M8 x 1.25 mm, for 0.8-4.5 mm thickness	2	
12	MCMaster_95210A210	Clip-On Barrel Nut, M8 x 1.25 mm, for 7 mm Thickness	7	
13	MCMaster_98093A746	Steel Screw, Flanged Hex Head, 10.9, M12 x 1.75 mm, 25 mm	4	
14	MCMaster_98093A756	Steel Screw, Flanged Hex Head, 10.9, M12 x 1.75 mm, 35 mm	2	



## 5 PREPARING TO INSTALL

---

### This section

- 5.1 Uninstalling the front seats** (see page 10)
- 5.2 Uninstalling the OEM console** (see page 17)
- 5.3 Uninstalling the OEM console (Cont'd)** (see page 25)
- 5.4 Uninstalling the OEM backseat** (see page 45)

## 5.1 Uninstalling the front seats



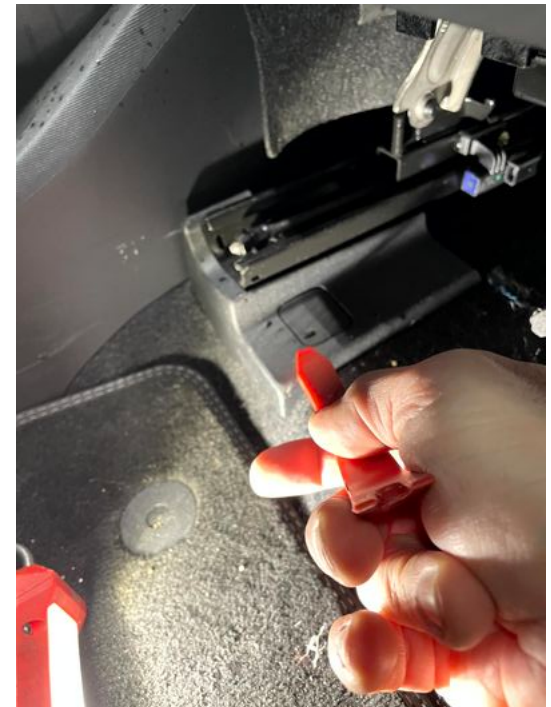
The following steps show the removal of the front driver seat.

Repeat the same operation for the passenger seat.

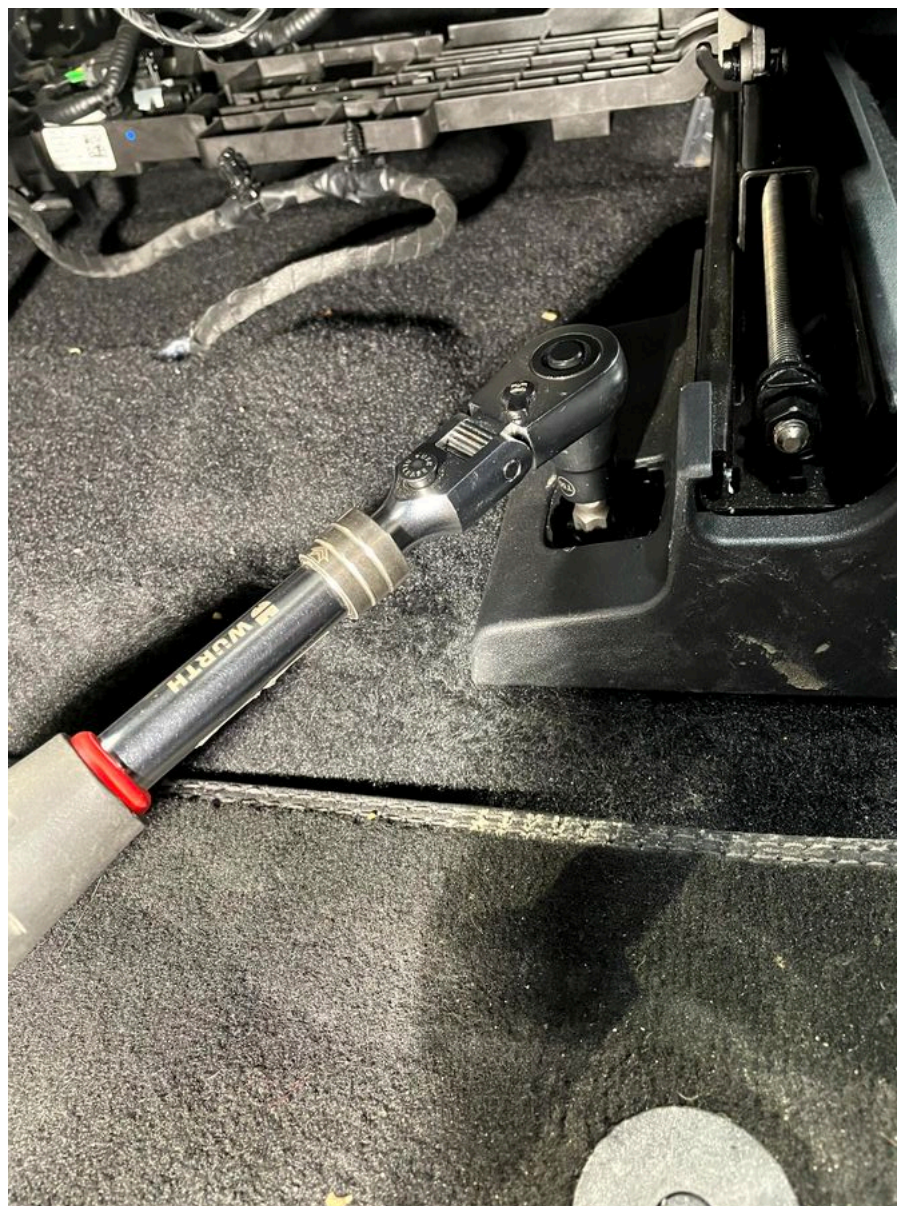
This example is taken from a Ford Mach-E 2021+.

1

1. Position the seat in the rear position for easy access to the front bolts.
2. Using a plastic extraction tool, remove the 2 hatches covering the front seat bolts.



- 2 Remove the 2 front seat bolts with a Torx T55.





3

1. Tilt the front seat back to the fully up position, then lower the cushion all the way down. This will make it easier to remove from the vehicle.
2. Finally, move it forward to access the rear seat bolts.



- 4** Using a Torx T50 bit, remove the 2 rear bolts from the seat.

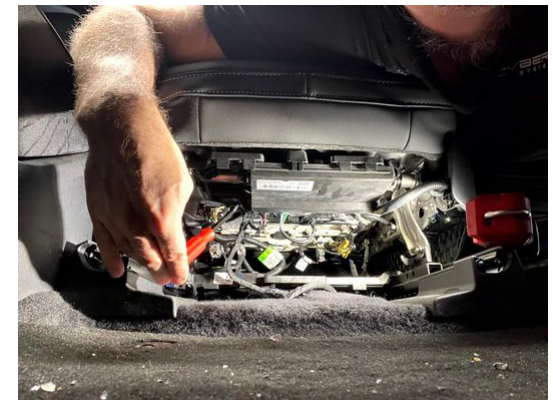
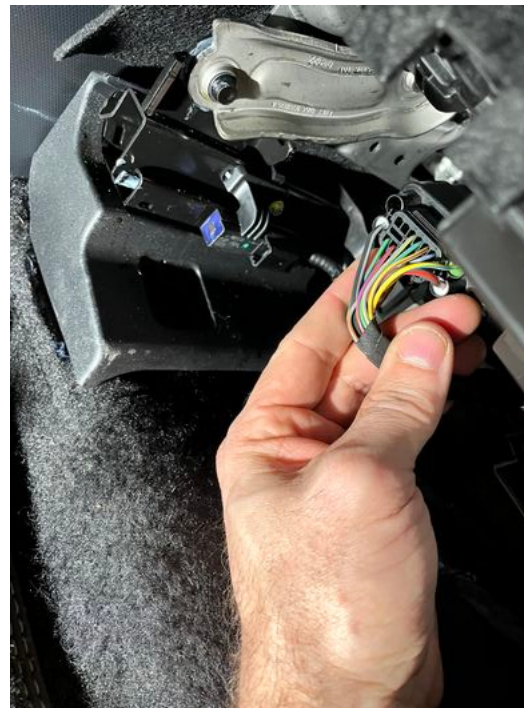


- 5** Turn off power to the SRS.

**i** See: **Supplemental Restraint System (SRS) Power Reduction**  
(*Supplemental Restraint System 501-20B, General Procedures*).

**i** See: **Supplemental Restraint System (SRS).**

- 6**
1. Disconnect the front seat electrical connector.
  2. Detach the retainers from the front seat wiring harness using a removal tool.





7

Remove the front seat.



- 
- 8** Repeat the same operation for the passenger seat.
-



## 5.2 Uninstalling the OEM console

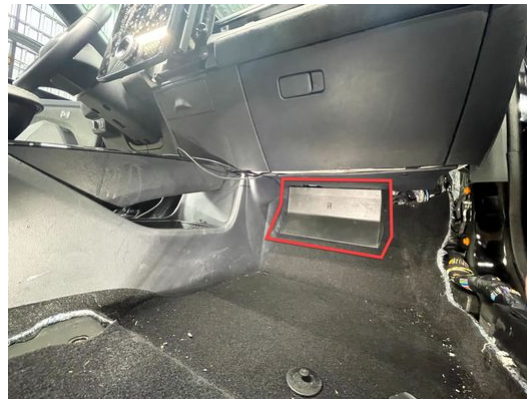


The following steps show the removal of the original floor console.

This example is taken from a Ford Mach-E 2021+.


1

Release the clips and remove the passenger side floor trim.



2

Release the clips and remove the front trim panel from the passenger side center console.

 Pull outward then back to remove.



3

Release the clips and remove the center console trim panel.



Use general equipment:  
Interior trim stripper.



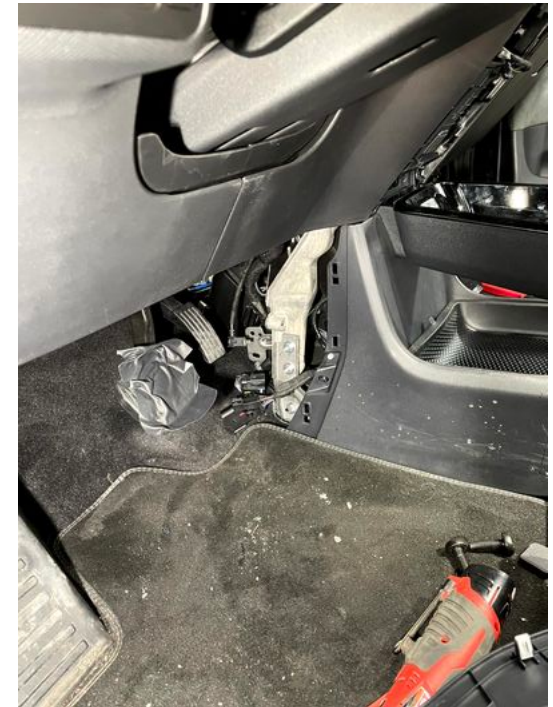
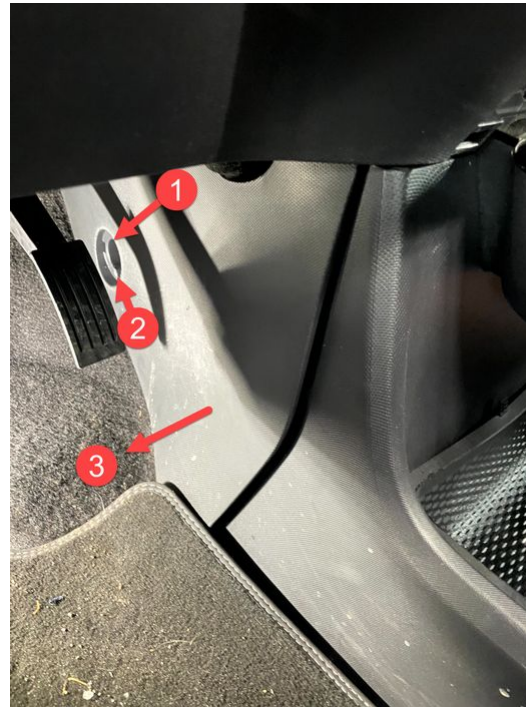


**4**

1. Remove the center console from trim cover on the passenger side.
2. Remove the bolt using an 8 mm bit.  
Torque: 22 in-lbs (2.5 N m)



Pull outward then back to remove.



**5**

- Release the clips and remove the front trim cover on the driver side.

- 6
1. Release the clips and remove the center console rear trim panel.
  2. Disconnect the electrical connector.



7

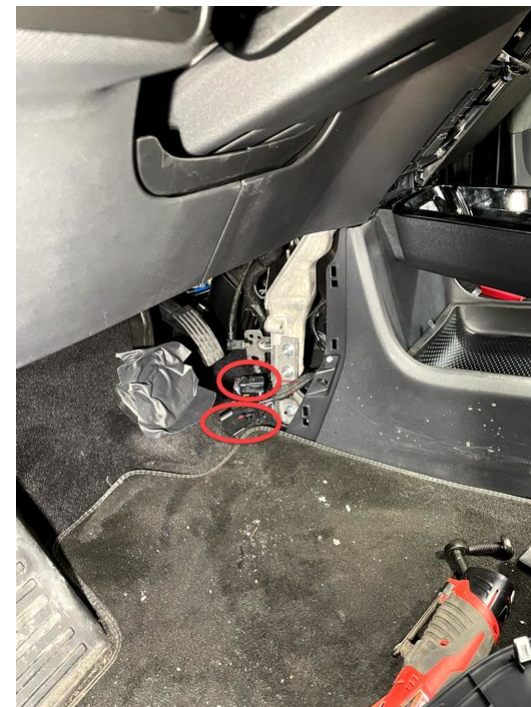
1. Remove the console rear bolts (each side) using an 8 mm bit.  
Torque: 119 in-lbs (13.5 N m)
2. Remove the front bolts using a 10 mm bit.  
Torque: 36 in-lbs (4.1 N m)





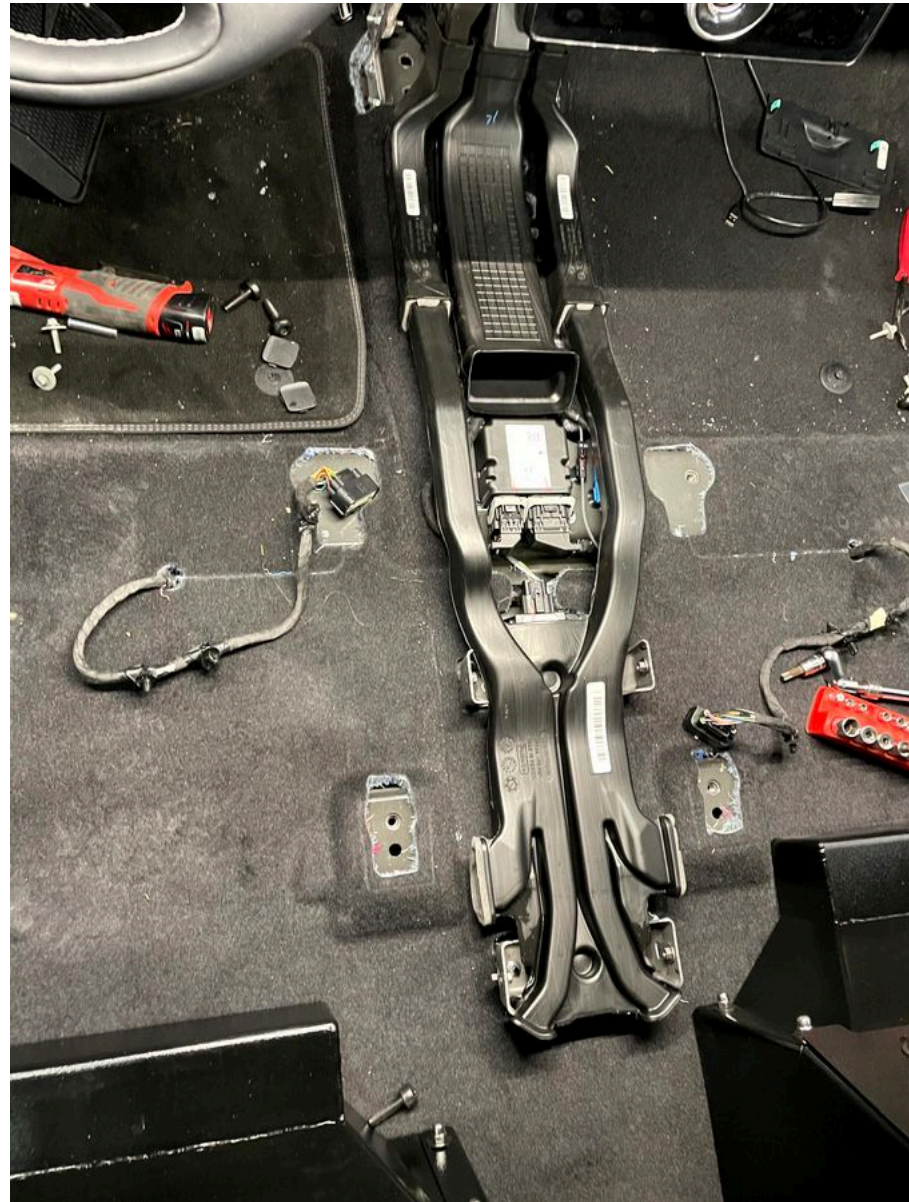
8

1. Disconnect the 4 front electrical connectors from the console (2 on each side).
2. Release the harness retainer.



9

Remove the console from the vehicle.





## 5.3 Uninstalling the OEM console (Cont'd)

1

Remove the conduits and mounting brackets from the original console

Remove the 2 clips shown in the photos to remove the rear part of the ventilation ducts.



2

Remove the 2 front side ducts using a tool to facilitate their removal.



- 3** Remove the center duct by disengaging the clips using a tool.

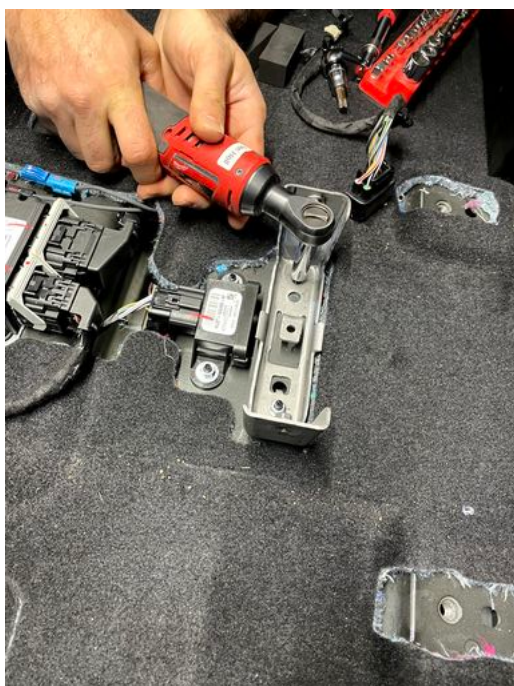




4

Remove the 2 supports at the back by removing the 4 screws then remove the 2 nuts from the front module.

Save these 4 screws and 2 nuts as they will be used to install the new console.

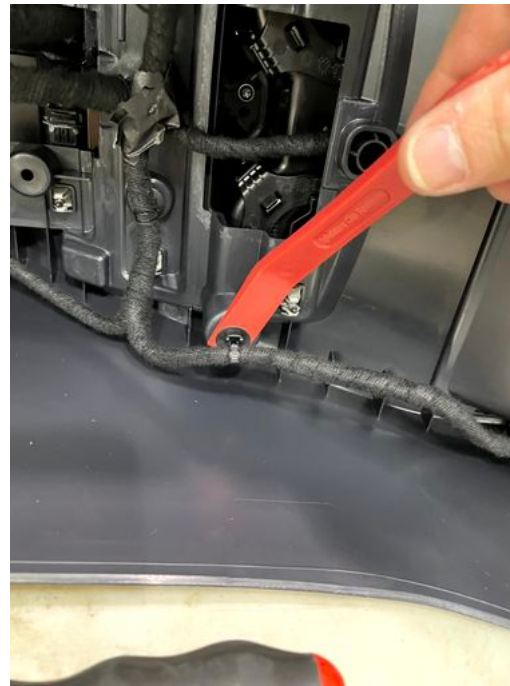
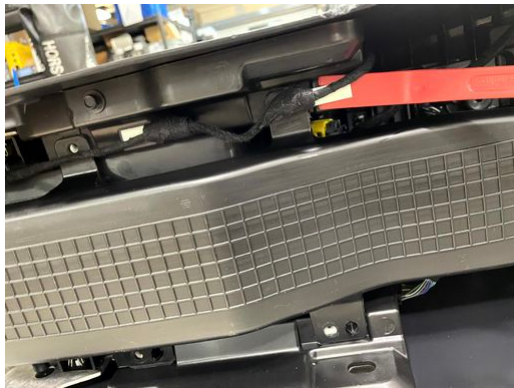


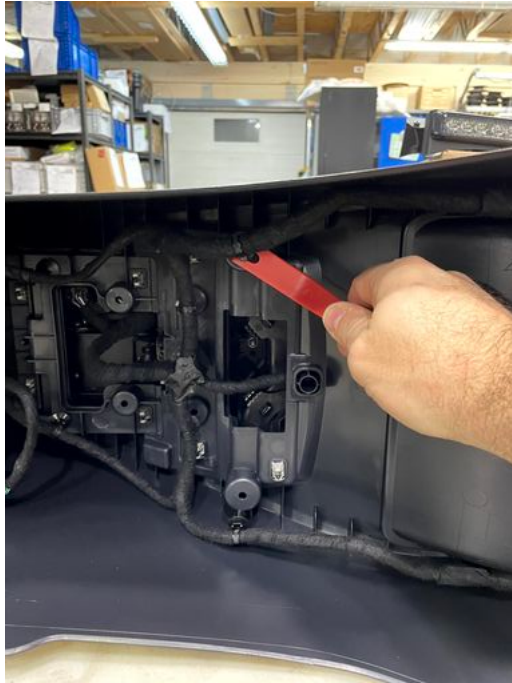
5

### Remove the electrical harness from the center console

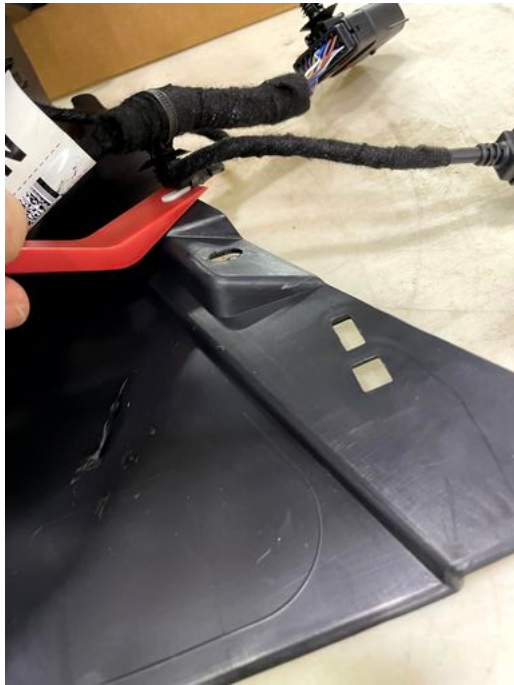
To remove the electrical harness, disengage the clips securing it to the original console.

Use photos for reference.















**6** Disconnect the cigarette lighter.



7

Remove the key module using a TX15 bit.



8

1. Remove the panel retaining the transmission selector.
2. Disconnect the 3 modules behind it.



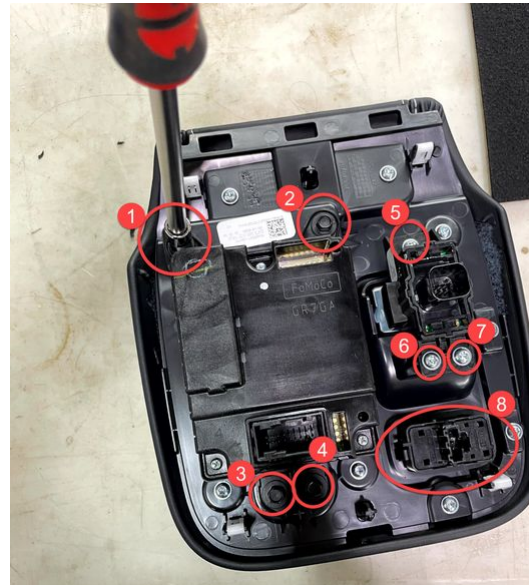


9

1. Remove the transmission module by removing screws 1-4.
2. Remove the parking brake module by removing screws 5-7.
3. Remove the horn module (*hazard*) by unclipping it.



These modules will be reinstalled later on the plates supplied with the console.



**10**

Remove the wireless charging module and disconnect it.



**11**

Disconnect the USB module and remove it by unclipping it.





12

1. Remove the console top panel using a plastic pry tool.
2. Unclip the clip at the bottom of the console, under the removed panel.





**13**

Disconnect the key sensor located under the panel removed in the previous step and use a TX15 bit to remove it.



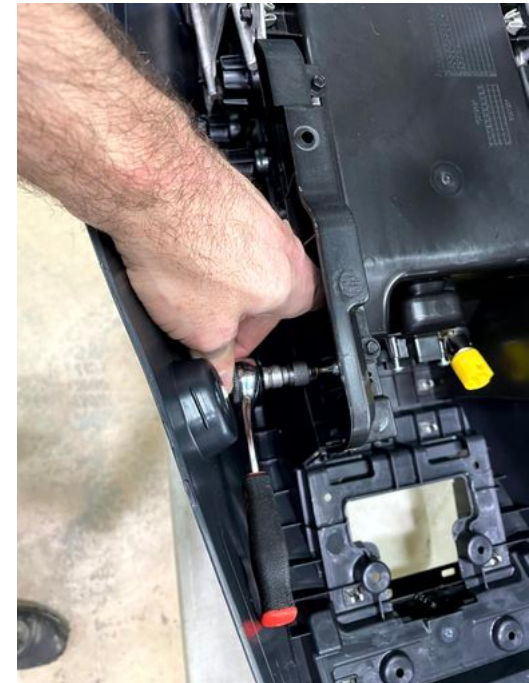
**14**

To remove the rear module located on the passenger side, behind the console, remove the screws as shown in the photos.



15

1. Disconnect the module.
2. Remove it by removing its 2 screws.





**16**

1. Connect the removed modules to the harness.
2. Replace the screws removed from the original console if it is planned to be reinstalled to restore the vehicle to its original state.





## 5.4 Uninstalling the OEM backseat

1

Remove the cushion from the seat of the bench by pulling upwards to disengage it, on each side.



- 2 Disconnect the 3 seatback connectors.  
Remove the ties that secure the cable.



3

Disengage the outboard side of the seat back (pull upwards towards the outboard joint).

Remove the rod from the other side then set the backrest aside.





4

Repeat the same steps on the other side.





- 5** Using a T50 Torx socket, remove the infant seat anchors.



## 6 INSTALLATION

1

Remove the OEM belt buckles.



Save the screws as they will be used in step 3 to install the new seatbelt mount (part #5).



2

Using a rotary cutting tool, remove the 2 threaded rods.





3

Secure the seatbelt mount (part #5) using the screws removed in step 1.

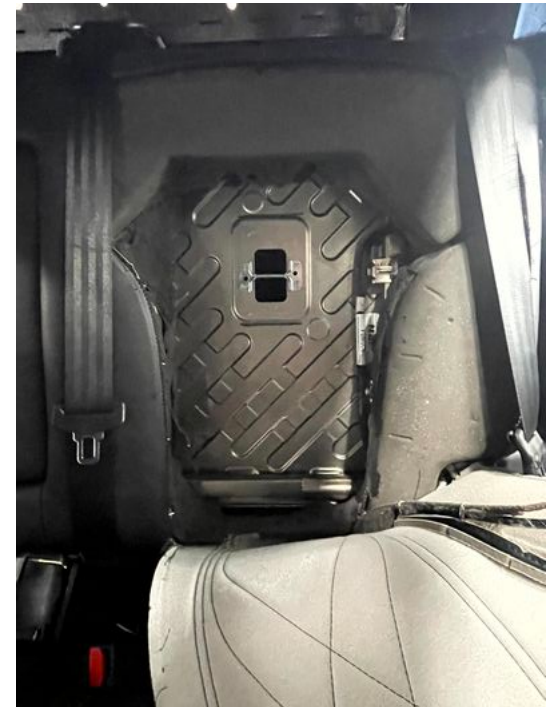


It is recommended to reattach the belt buckles removed in step 1 with these same screws.

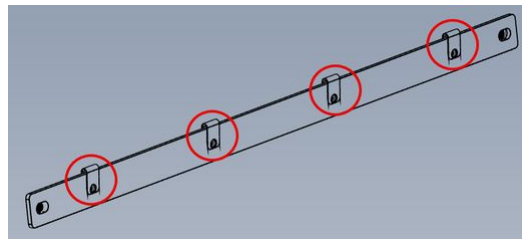




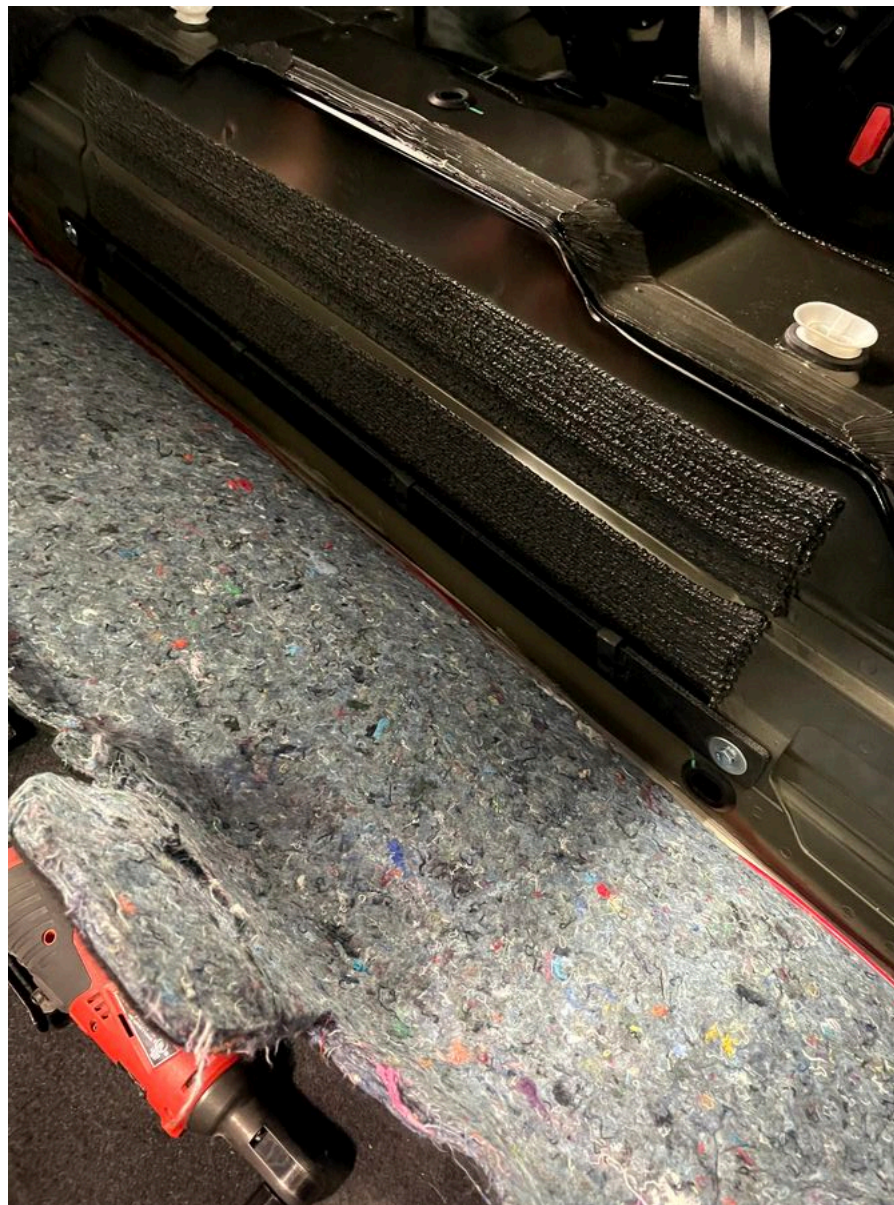
- 4** Cut and remove the padding from the backrests.



- 5** Insert 4 clip-on barrel nuts (item #Q12) on the backseat mounting plate (part #1) and 2 clip-on barrel nuts (item #Q11) as in the photos.



- 6 Secure the backseat mounting plate to the vehicle using 2 screws (item #Q9) and 2 washers (item #Q7).





7

Return the mat to its original position and drill 4 holes in it aligned with the barrel nuts.



8

- Use a cookie cutter of at least 1-3/8" to expose the original belt nut on each side of the vehicle.
- Unscrew the original belt and secure it in the vehicle to avoid unwanted noise.
- Attach new floor buckle (part #17).



9

- Insert the molded seat into the vehicle through one of the front doors.



Take care not to rub the vehicle's upholstery so as not to damage them.

- Pass the belt anchors through the pass-throughs (part #3) opened into the molded backseat.
- Secure the pass-throughs and their retaining plates (parts #3 and 4) using 8 screws (item #Q8).



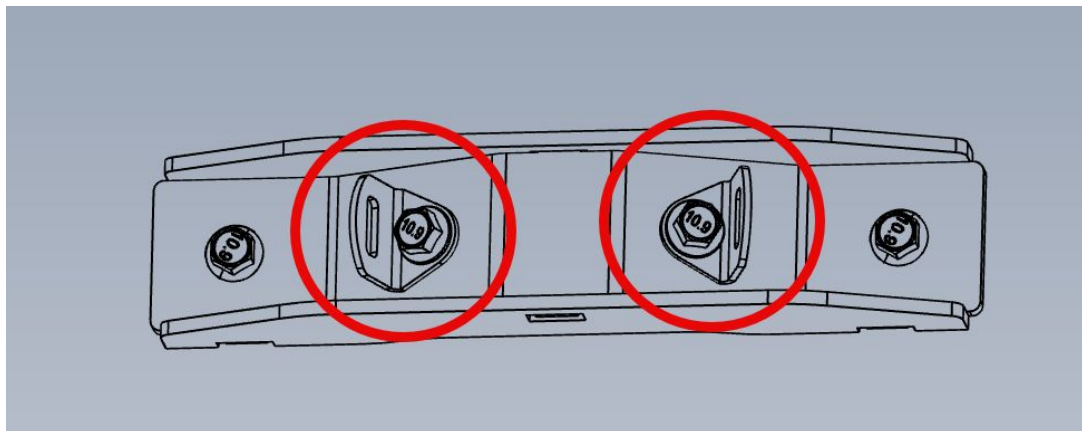


10

Secure the straps under the backseat to the seatbelt mount (part #5) using 2 screws (item #Q13).



Make sure the straps are not twisted.



**11**

Secure the bottom of the backseat using 4 screws (item #Q9) and 4 washers (item #Q7).



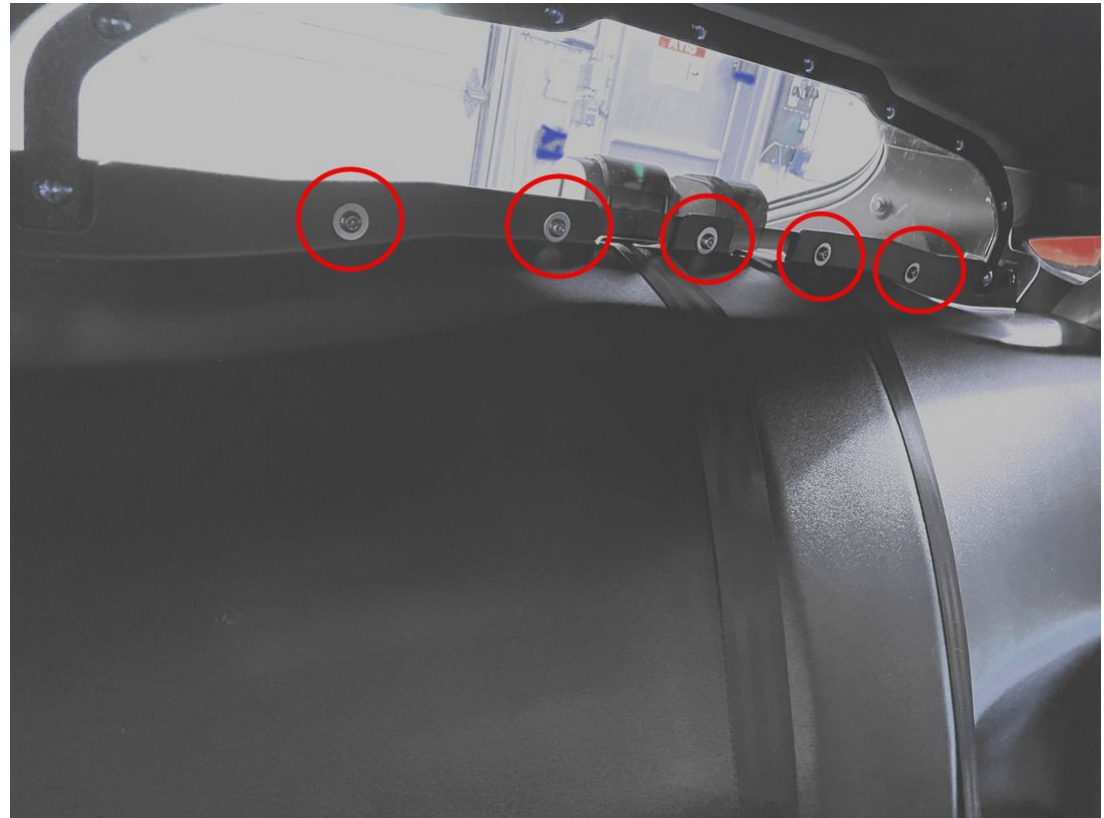
**12**

Secure the top of the backseat to the rear cargo partition using the 5 screws and washers supplied with this partition (KMN-CLOIA-SIM-FME21A).



**See :**

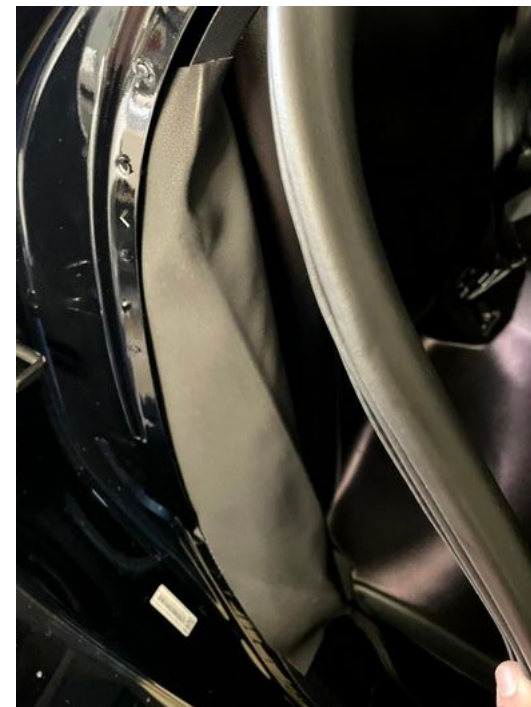
- KMN-CLOIA-SIM-FME21A  
Installation Manual
  - Installation
    - Method 2: Vehicle  
with rear molded  
seat
      - Step 3





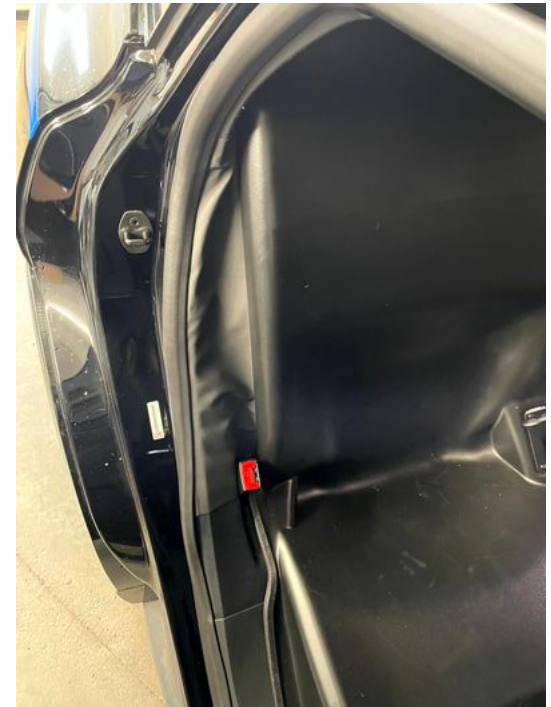
**13**

Remove the door seal strip then slide the airbag cover (part #6) behind the trim as far as it will go.



14

- Replace the seal strip by stretching the cover canvas as much as possible.
- Repeat the same steps on the other side.

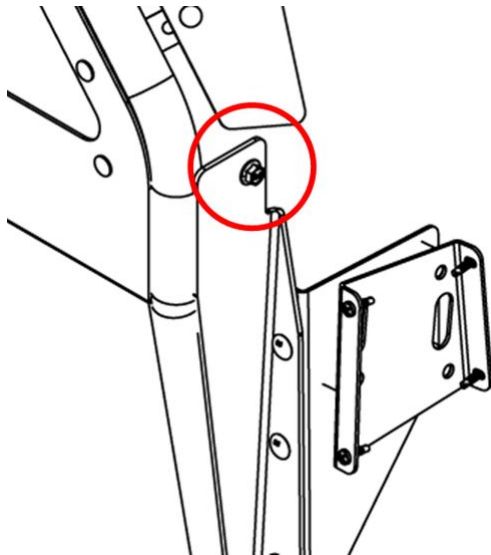


15

Use a screw and nut to secure the belt buckle (part #16) to the anchor provided on the prisoner partition.



The screws and nuts to be used are pre-installed on the prisoner partition.





## 7 TECHNICAL SUPPORT

---

### Cyberkar® Systems

---

Address:	3026 Anderson, suite 202 Terrebonne (Quebec) J6Y 1W1 Canada
----------	---

---

Toll-free number:	1-855-951-3080
-------------------	----------------

---

### Tech support team

---

Days/hours of operation:	Monday to Friday, 8 a.m.—5 p.m. (EST).
--------------------------	--

---

Escalation process:	E-mail is used for escalations outside of hours of operation.
---------------------	---

---

E-mail:	support@cyberkar.com
---------	----------------------

---









Installation Manual (rev. 2)

© All rights reserved, Cyberkar® Systems, 2023

[www.kommanderbycyberkar.com/en/](http://www.kommanderbycyberkar.com/en/)

Rear Molded Seat

Ford Mach-E 2021+

KMN-BANC-FME21A